

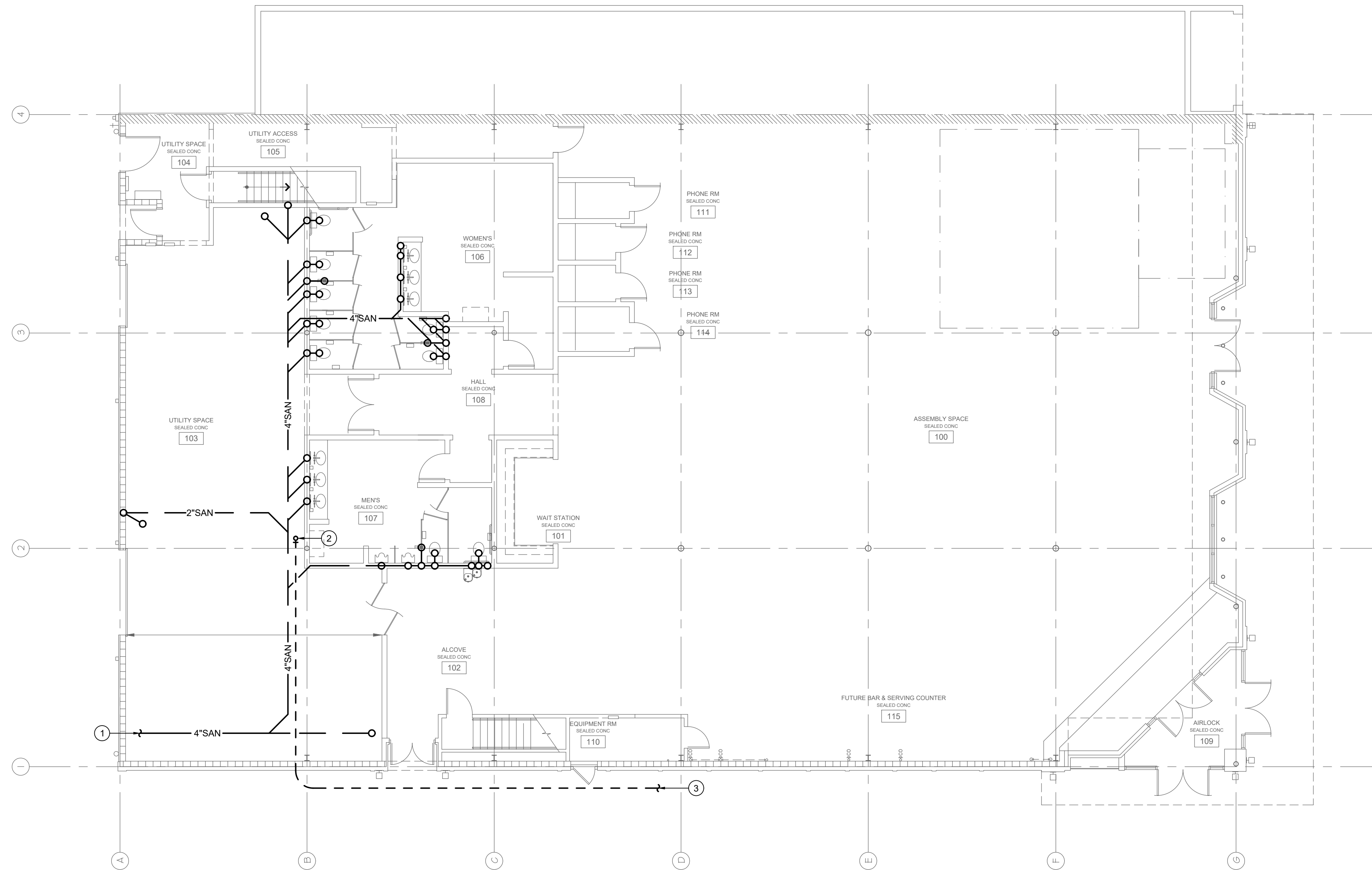
GENERAL NOTES:

1. PRIOR TO SUBMITTING BID, VISIT THE JOB SITE AND BECOME FULLY ACQUAINTED WITH THE EXISTING CONDITIONS OF THE PROJECT. REVIEW GENERAL NOTES, SPECIFICATIONS AND OTHER DISCIPLINE'S DRAWINGS FOR ADDITIONAL REQUIREMENTS THAT MAY NOT BE SPECIFICALLY CALLED OUT IN THIS PORTION OF THE CONSTRUCTION DOCUMENTS. NOTIFY ARCHITECT, OWNER AND ENGINEER OF ANY DISCREPANCIES PRIOR TO SUBMISSION OF BID.
2. EXISTING CONDITIONS WERE TAKEN FROM AS BUILT DRAWINGS AND SITE VISITS AND MAY NOT REFLECT EXACT "AS-BUILT" CONDITIONS. COORDINATE DEMOLITION WORK AND NEW WORK WITH EXISTING CONDITIONS AND OTHER TRADES PRIOR TO CONSTRUCTION.
3. REFER TO ARCHITECTURAL DRAWINGS FOR RELATED CONSTRUCTION DETAILS AS APPLICABLE TO THE PLUMBING SYSTEMS. VERIFY CHASE AND PENETRATION LOCATIONS SHOWN ON THE ARCHITECTURAL DRAWINGS THAT ARE INTENDED FOR PIPING MEET REQUIREMENTS.
4. INSTALL PIPING PARALLEL TO BUILDING LINES, UNLESS NOTED OTHERWISE.
5. COORDINATE LOCATION OF EQUIPMENT AND SUPPORTS WITH LOCATION OF ACCESS PANELS/DOORS TO ENABLE SERVICE OF EQUIPMENT. IF NO ACCESS PANEL IS SHOWN, PROVIDE ACCESS PANEL IN SIZE REQUIRED FOR MAINTENANCE OF EQUIPMENT. COORDINATE EXACT LOCATION WITH ARCHITECT PRIOR TO INSTALLATION.
6. SEAL PENETRATIONS THROUGH BUILDING COMPONENTS IN ACCORDANCE WITH LOCAL CODES. FIREPROOF PENETRATIONS THROUGH FIRE RATED COMPONENTS IN ACCORDANCE WITH U.L. REQUIREMENTS. FIRE RATED COMPONENTS INCLUDE BUT ARE NOT LIMITED TO THE RATED CEILING ASSEMBLY LOCATED WITHIN THE ATTIC SPACE. REFER TO THE ARCHITECTURAL PLANS FOR ANY ADDITIONAL RATED COMPONENTS.

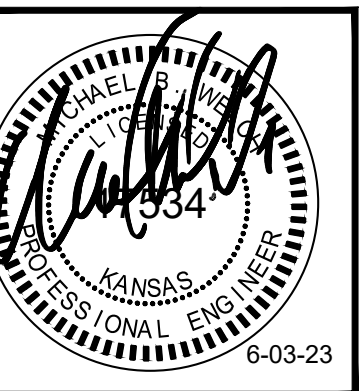
PLAN NOTES:

1. CONNECT NEW 4" SANITARY TO EXISTING SANITARY MAIN. FIELD VERIFY EXACT LOCATION.
2. 2" CW UP TO FLOOR ABOVE.
3. 2" CW (PEX), EXTEND AND CONNECT TO EXISTING CW SUPPLY LINE.

PLUMBING FIXTURE CONN. SCHEDULE					
FIXTURE	MARK	CW	HW	WASTE	VENT
LAVATORY	L-1,2	1/2"	1/2"	2"	1-1/2"
ELECTRIC WATER COOLER	EW-1	1/2"	--	2"	1-1/2"
FLUSH TANK WATER CLOSET	WC-1	1/2"	--	3"	2"
JANITOR SINK	JS-1	3/4"	3/4"	3"	2"
URINAL	U-1	3/4"	--	3"	2"
NON FREEZE ROOF HYDRANT	NFRH-1	3/4"	--	--	--
FLOOR SINK	FS-1	--	--	3"	2"
FLOOR DRAIN	FD-1	1/2"	--	2"	1-1/2"



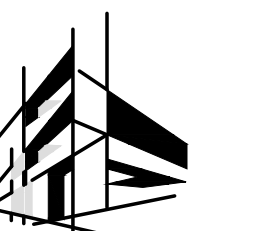
1 UNDERSLAB FLOOR PLAN - PLUMBING
1/8"=1'-0"



WELLINGTON WOOLWORTH – COMMUNITY 101
101-103 SOUTH WASHINGTON AVE
WELLINGTON, KANSAS 67152

GC: DECENT ENERGY, INC.

DEVELOPER: STOMATA DEVELOPMENT, LLC



AEC

ARCHITECTURAL
ENGINEERING
CONSORTIUM, INC

MECHANICAL • ELECTRICAL • PLUMBING
STRUCTURAL • FIRE PROTECTION
WWW.AECONSORT.COM

10233 MILLSTONE DRIVE, #4112
LENEA, KS 66220
P: 816-916-4875

JOB NO.: 23108

DATE: 05/03/2023

REVISIONS:

DESIGNED BY: MBW

DRAWN BY: ELS

CHECKED BY: MBW

SHEET NO.

P1

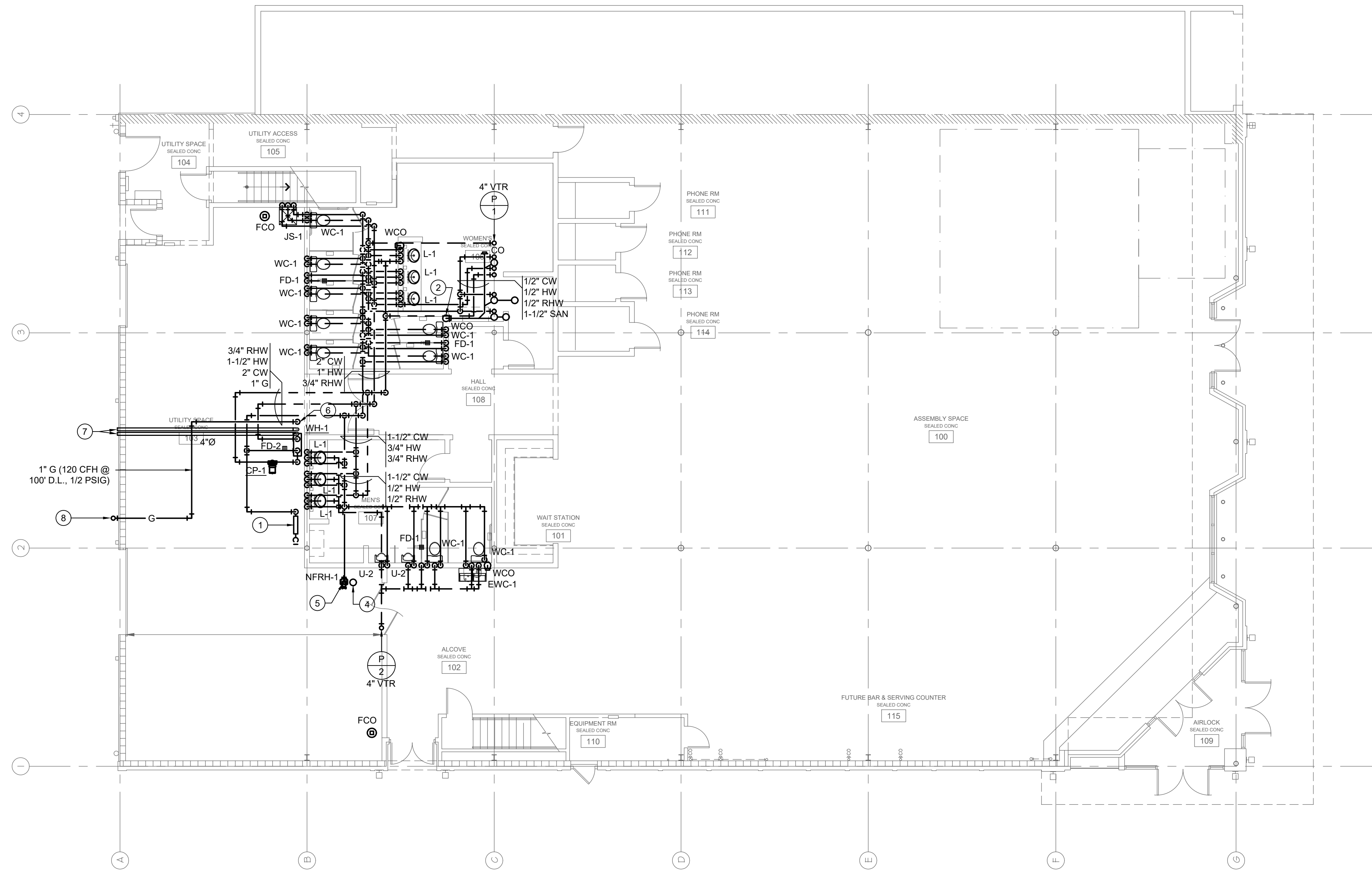
GENERAL NOTES:

1. PRIOR TO SUBMITTING BID, VISIT THE JOB SITE AND BECOME FULLY ACQUAINTED WITH THE EXISTING CONDITIONS OF THE PROJECT. REVIEW GENERAL NOTES, SPECIFICATIONS AND OTHER DISCIPLINE'S DRAWINGS FOR ADDITIONAL REQUIREMENTS THAT MAY NOT BE SPECIFICALLY CALLED OUT IN THIS PORTION OF THE CONSTRUCTION DOCUMENTS. NOTIFY ARCHITECT, OWNER AND ENGINEER OF ANY DISCREPANCIES PRIOR TO SUBMISSION OF BID.
2. EXISTING CONDITIONS WERE TAKEN FROM AS BUILT DRAWINGS AND SITE VISITS AND MAY NOT REFLECT EXACT "AS-BUILT" CONDITIONS. COORDINATE DEMOLITION WORK AND NEW WORK WITH EXISTING CONDITIONS AND OTHER TRADES PRIOR TO CONSTRUCTION.
3. REFER TO ARCHITECTURAL DRAWINGS FOR RELATED CONSTRUCTION DETAILS AS APPLICABLE TO THE PLUMBING SYSTEMS. VERIFY CHASE AND PENETRATION LOCATIONS SHOWN ON THE ARCHITECTURAL DRAWINGS THAT ARE INTENDED FOR PIPING MEET REQUIREMENTS.
4. INSTALL PIPING PARALLEL TO BUILDING LINES, UNLESS NOTED OTHERWISE.
5. COORDINATE LOCATION OF EQUIPMENT AND SUPPORTS WITH LOCATION OF ACCESS PANELS/DOORS TO ENABLE SERVICE OF EQUIPMENT. IF NO ACCESS PANEL IS SHOWN, PROVIDE ACCESS PANEL IN SIZE REQUIRED FOR MAINTENANCE OF EQUIPMENT. COORDINATE EXACT LOCATION WITH ARCHITECT PRIOR TO INSTALLATION.
6. SEAL PENETRATIONS THROUGH BUILDING COMPONENTS IN ACCORDANCE WITH LOCAL CODES. FIREPROOF PENETRATIONS THROUGH FIRE RATED COMPONENTS IN ACCORDANCE WITH U.L. REQUIREMENTS. FIRE RATED COMPONENTS INCLUDE BUT ARE NOT LIMITED TO THE RATED CEILING ASSEMBLY LOCATED WITHIN THE ATTIC SPACE. REFER TO THE ARCHITECTURAL PLANS FOR ANY ADDITIONAL RATED COMPONENTS.

PLAN NOTES:

- 1 2" CW FROM BELOW SLAB, PROVIDE 2" RPZ TYPE BACK FLOW PREVENTOR.
- 2 4" SANITARY DOWN TO BELOW SLAB.
- 3 1-1/2" CW AND 1-1/2" HW DOWN TO WATER HEATER BELOW.
- 4 EXTEND DRAIN LINE FROM ROOF HYDRANT DRAIN HOLE, ROUTE AS HIGH AS POSSIBLE AND EXTEND TO FLOOR SINK AT FREEZERS BELOW.
- 5 3/4" CW UP TO NFRH-1 ABOVE.
- 6 1" GAS DOWN TO WH-1.
- 7 4"Ø GAS WATER HEATER FLUE AND 4"Ø COMBUSTION AIR, TERMINATE AT CEILING HEIGHT WITH APPROVED FITTINGS PER MANUFACTURE INSTRUCTIONS.
- 8 2-1/2" GAS (1260 CFH, 1/2 PSIG) UP TO ROOF (SEE ROOF PLAN FOR CONTINUATION AND 2-1/2" GAS (1380 CFH, 1/2 PSIG) DOWN TO GRADE. COORDINATE WITH GAS SERVICE PROVIDER AND PROVIDE NEW SINGLE GAS METER AND ALL ASSOCIATED ACCESSORIES REQUIRED BY SERVICE PROVIDER. FIELD VERIFY EXACT LOCATION.

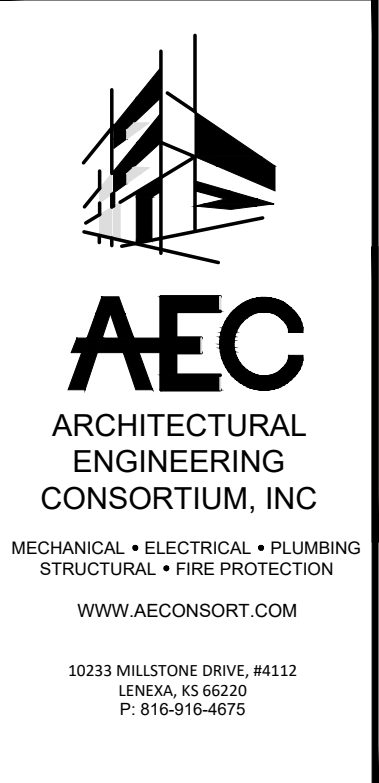
PLUMBING FIXTURE CONN. SCHEDULE					
FIXTURE	MARK	CW	HW	WASTE	VENT
LAVATORY	L-1,2	1/2"	1/2"	2"	1-1/2"
ELECTRIC WATER COOLER	EWC-1	1/2"	-	2"	1-1/2"
FLUSH TANK WATER CLOSET	WC-1	1/2"	-	3"	2"
JANITOR SINK	JS-1	3/4"	3/4"	3"	2"
URINAL	U-1	3/4"	-	3"	2"
NON FREEZE ROOF HYDRANT	NFRH-1	3/4"	-	-	-
FLOOR SINK	FS-1	-	-	3"	2"
FLOOR DRAIN	FD-1	1/2"	-	2"	1-1/2"



1 FIRST FLOOR PLAN - PLUMBING
1/8"=1'-0"



WELLINGTON WOOLWORTH – COMMUNITY 101
101-103 SOUTH WASHINGTON AVE
WELLINGTON, KANSAS 67152
DEVELOPER: STOMATA DEVELOPMENT, LLC
GC: DECENT ENERGY, INC.



JOB NO.: 23108
DATE: 05/03/2023
REVISIONS:

DESIGNED BY: MBW
DRAWN BY: ELS
CHECKED BY: MBW
SHEET NO.

P2

C:\USERS\WELCH\DESKTOP\MWEC\2023\2311000E - WOOLWORTH BUILDING\DRAWINGS\WOOLWORTH BUILDING PLUMBING.DWG : 6/5/2023 10:20:40 AM : estum

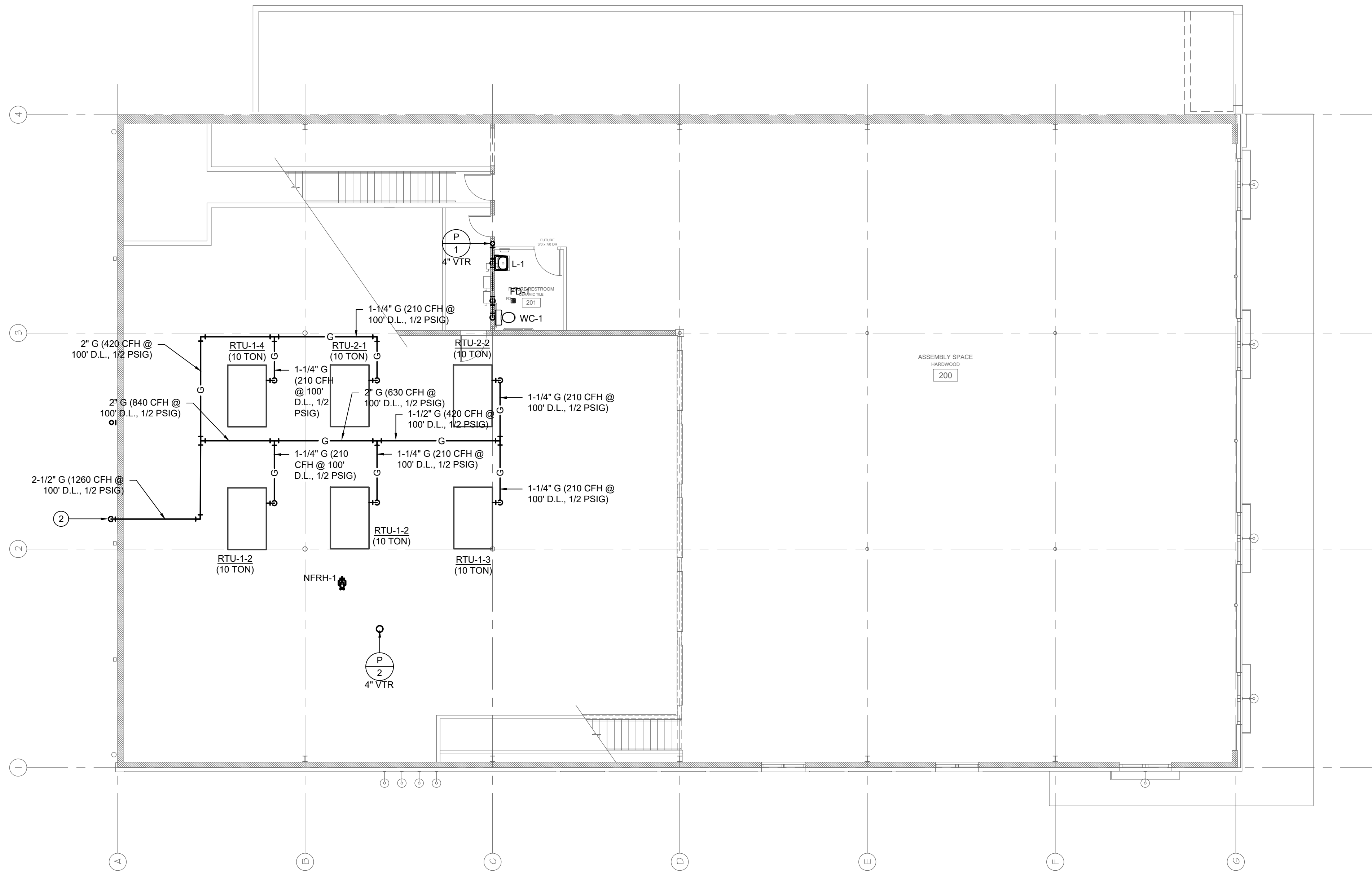
GENERAL NOTES:

1. PRIOR TO SUBMITTING BID, VISIT THE JOB SITE AND BECOME FULLY ACQUAINTED WITH THE EXISTING CONDITIONS OF THE PROJECT. REVIEW GENERAL NOTES, SPECIFICATIONS AND OTHER DISCIPLINE'S DRAWINGS FOR ADDITIONAL REQUIREMENTS THAT MAY NOT BE SPECIFICALLY CALLED OUT IN THIS PORTION OF THE CONSTRUCTION DOCUMENTS. NOTIFY ARCHITECT, OWNER AND ENGINEER OF ANY DISCREPANCIES PRIOR TO SUBMISSION OF BID.
2. EXISTING CONDITIONS WERE TAKEN FROM AS BUILT DRAWINGS AND SITE VISITS AND MAY NOT REFLECT EXACT "AS-BUILT" CONDITIONS. COORDINATE DEMOLITION WORK AND NEW WORK WITH EXISTING CONDITIONS AND OTHER TRADES PRIOR TO CONSTRUCTION.
3. REFER TO ARCHITECTURAL DRAWINGS FOR RELATED CONSTRUCTION DETAILS AS APPLICABLE TO THE PLUMBING SYSTEMS. VERIFY CHASE AND PENETRATION LOCATIONS SHOWN ON THE ARCHITECTURAL DRAWINGS THAT ARE INTENDED FOR PIPING MEET REQUIREMENTS.
4. INSTALL PIPING PARALLEL TO BUILDING LINES, UNLESS NOTED OTHERWISE.
5. COORDINATE LOCATION OF EQUIPMENT AND SUPPORTS WITH LOCATION OF ACCESS PANELS/DOORS TO ENABLE SERVICE OF EQUIPMENT. IF NO ACCESS PANEL IS SHOWN, PROVIDE ACCESS PANEL IN SIZE REQUIRED FOR MAINTENANCE OF EQUIPMENT. COORDINATE EXACT LOCATION WITH ARCHITECT PRIOR TO INSTALLATION.
6. SEAL PENETRATIONS THROUGH BUILDING COMPONENTS IN ACCORDANCE WITH LOCAL CODES. FIREPROOF PENETRATIONS THROUGH FIRE RATED COMPONENTS IN ACCORDANCE WITH U.L. REQUIREMENTS. FIRE RATED COMPONENTS INCLUDE BUT ARE NOT LIMITED TO THE RATED CEILING ASSEMBLY LOCATED WITHIN THE ATTIC SPACE. REFER TO THE ARCHITECTURAL PLANS FOR ANY ADDITIONAL RATED COMPONENTS.

PLAN NOTES:

1. 3/4" CONDENSATE DRAIN, ROUTE TO NEAREST ROOF DRAIN OR GUTTER TURN DOWN AND TERMINATE.
2. 1" GAS DOWN TO WH-1 BELOW. (120 CFH @ 100 D.L. @ 1/2 PSIG).
3. 2-1/2" GAS (1380 CFH, 1/2 PSIG) TO BELOW. COORDINATE WITH GAS SERVICE PROVIDER AND PROVIDE NEW SINGLE GAS METER AND ALL ASSOCIATED ACCESSORIES REQUIRED BY SERVICE PROVIDER. FIELD VERIFY EXACT LOCATION.
4. 4" GAS WATER HEATER FLUE AND 4" GAS COMBUSTION AIR. TERMINATE WITH APPROVED FITTINGS.

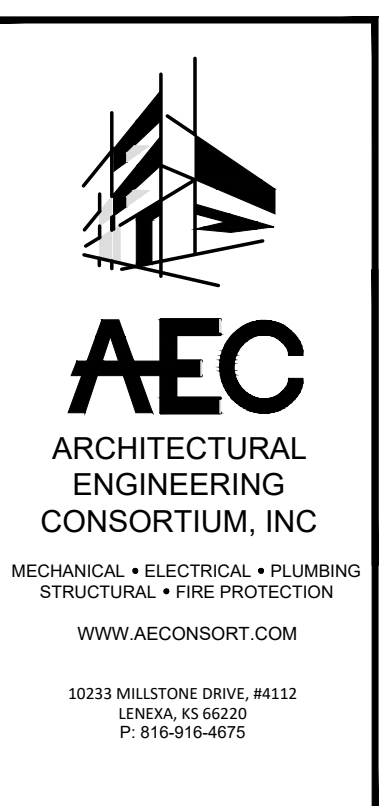
PLUMBING FIXTURE CONN. SCHEDULE					
FIXTURE	MARK	CW	HW	WASTE	VENT
LAVATORY	L-1,2	1/2"	1/2"	2"	1-1/2"
ELECTRIC WATER COOLER	EWC-1	1/2"	-	2"	1-1/2"
FLUSH TANK WATER CLOSET	WC-1	1/2"	-	3"	2"
JANITOR SINK	JS-1	3/4"	3/4"	3"	2"
URINAL	U-1	3/4"	-	3"	2"
NON FREEZE ROOF HYDRANT	NFRH-1	3/4"	-	-	-
FLOOR SINK	FS-1	-	-	3"	2"
FLOOR DRAIN	FD-1	1/2"	-	2"	1-1/2"



1 SECOND FLOOR PLAN - PLUMBING
1/8"=1'-0"



WELLINGTON WOOLWORTH - COMMUNITY 101
101-103 SOUTH WASHINGTON AVE
WELLINGTON, KANSAS 67152
DEVELOPER: STOMATA DEVELOPMENT, LLC
GC: DECENT ENERGY, INC.



JOB NO.:	23108
DATE:	05/03/2023
REVISIONS:	
DESIGNED BY:	MBW
DRAWN BY:	ELS
CHECKED BY:	MBW
SHEET NO.	

P3

C:\USERS\WELCH\DESKTOP\MWEC\2023\2311000E - WOOLWORTH BUILDING\DRAWINGS\WOOLWORTH BUILDING PLUMBING.DWG : 6/5/2023 10:20:40 AM : estum

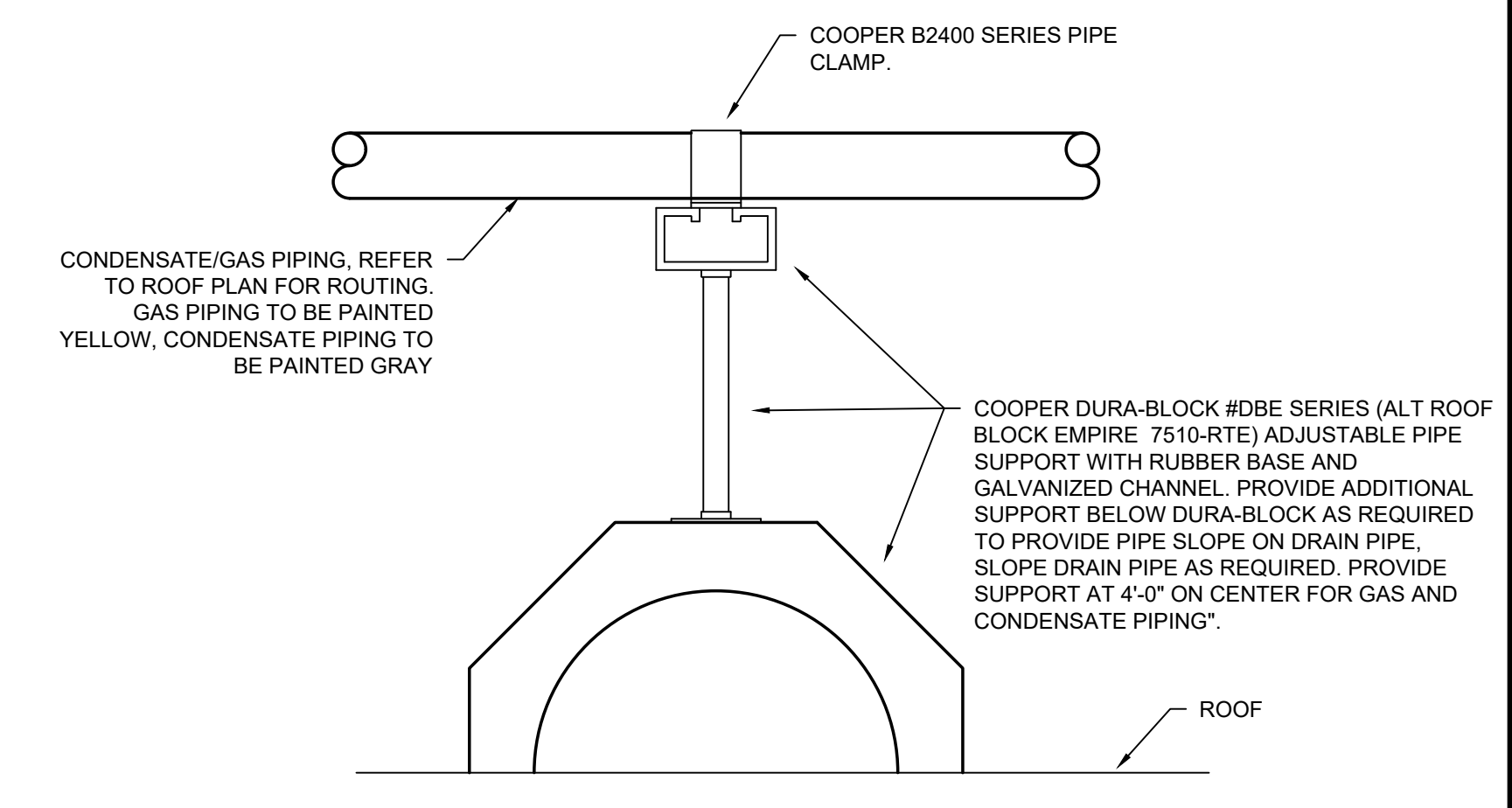


WELLINGTON WOOLWORTH - COMMUNITY 101
 101-103 SOUTH WASHINGTON AVE
 WELLINGTON, KANSAS 67152
 DEVELOPER: STOMATA DEVELOPMENT, LLC
 GC: DECENT ENERGY, INC.

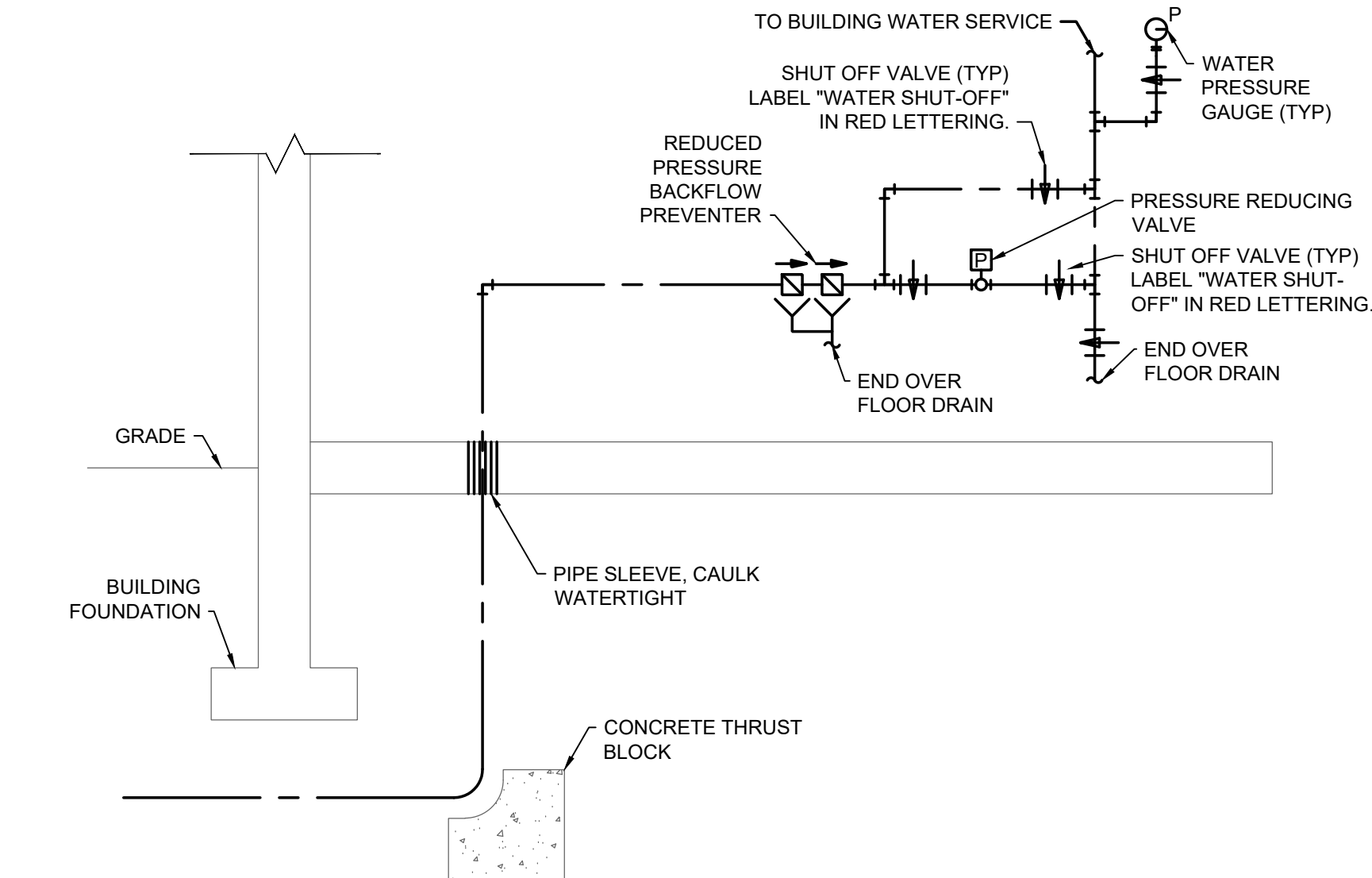


JOB NO.: 2310B
 DATE: 05/03/2023
 REVISIONS:
 DESIGNED BY: MBW
 DRAWN BY: ELS
 CHECKED BY: MBW
 SHEET NO.

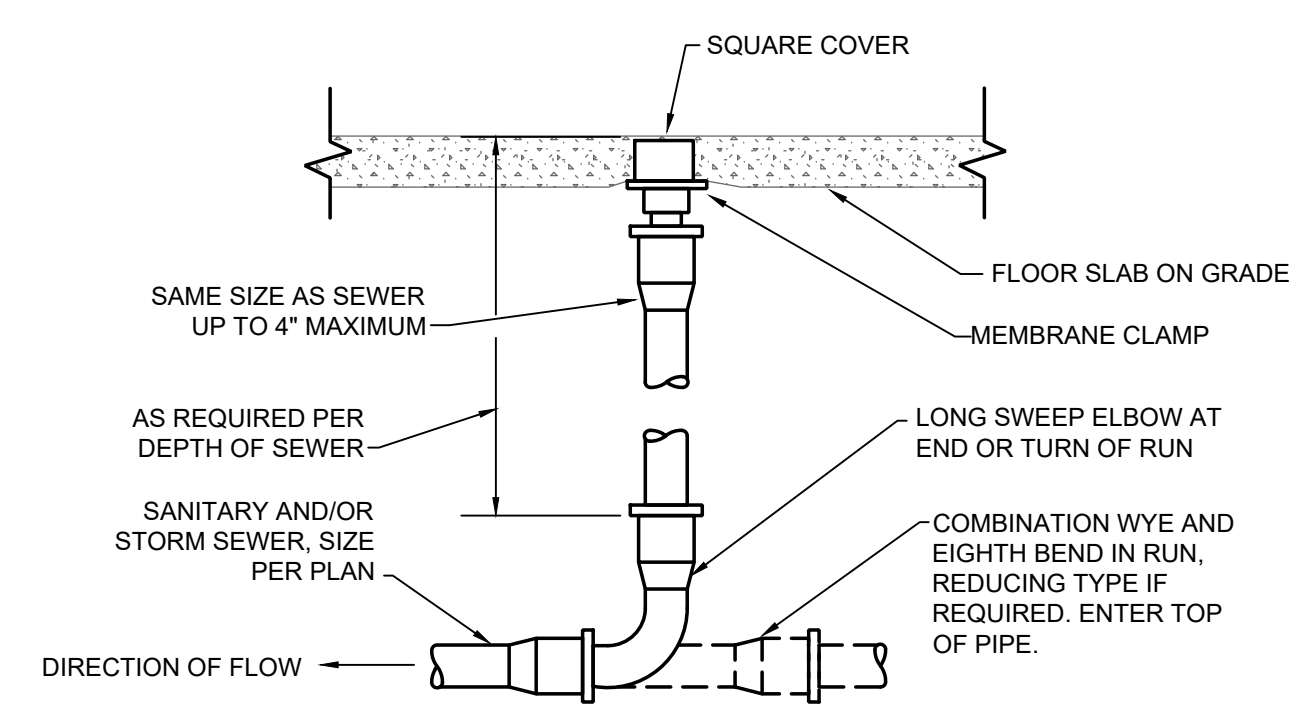
PLUMBING FIXTURE SCHEDULE						
PLAN MARK	MANUFACTURER AND MODEL	FIXTURE DESCRIPTION	ACCESSORIES MANUFACTURER AND MODEL	ACCESSORIES DESCRIPTION	SIZE	NOTES
EWC-1	HALSEY TAYLOR HAC8BLSS-WF	TWO LEVEL, ADA COMPLIANT, BARRIER FREE, STAINLESS STEEL FILTERED WATER COOLER WITH PUSH BAR ACTUATORS			-	
FD-1	JAY R SMITH 2010-P050	CAST IRON SHALLOW SUMP FLOOR DRAIN WITH 5" SQUARE TOP WITH NICKEL BRONZE STRAINER AND 1/2" TRAP PRIMER CONNECTION.	JAY R SMITH 2699	TRAP PRIMER WITH 1/2" CONNECTION.	-	REFER TO TRAP PRIMER DETAIL FOR CONNECTION.
FD-2	WATTS FD-463P-F	FLOOR DRAIN, 12 INCH SQUARE DUCTILE IRON GRATE, EPOXY COATED CAST IRON	-		-	
L-1	AMERICAN STANDARD LUCERNE 0356.041	VITREOUS CHINA, ADA COMPLIANT, D-SHAPED BOWL WALL HUNG LAVATORY.	AMERICAN STANDARD COLONY 2175.205	SINGLE CONTROL CENTERSET FAUCET WITH METAL LEVER HANDLE.	-	PROVIDE CHROME PLATED BRASS TAILPIECE AND GRID DRAIN, CHROME PLATED BRASS P-TRAP, ANGLED STOP VALVES AND FLEXIBLE RISERS. INSULATE EXPOSED TAILPIECE, P-TRAP, AND WATER RISERS WITH ADA COMPLIANT INSULATION. SUPPLY WITH POINT OF USE MIXING VALVE THAT COMPLIES WITH ASSE1070. SET OUTLET TEMPERATURE TO 105° F.
L-1	AMERICAN STANDARD AQUALYN 0476.028	OVAL, SELF RIMMING, ADA COMPLIANT, VITREOUS CHINA OVAL LAVATORY.	COLONY 2175.205	SINGLE CONTROL LAVATORY FAUCET.	-	PROVIDE CHROME PLATED BRASS TAILPIECE AND GRID DRAIN, CHROME PLATED BRASS P-TRAP, ANGLED STOP VALVES AND FLEXIBLE RISERS. INSULATE EXPOSED TAILPIECE, P-TRAP, AND WATER RISERS WITH ADA COMPLIANT INSULATION. SUPPLY WITH POINT OF USE MIXING VALVE THAT COMPLIES WITH ASSE1070. SET OUTLET TEMPERATURE TO 105° F.
NFRH-1	JAY R SMITH 5906	NON-FREEZE ROOF HYDRANT WITH GALVANIZED CASING AND ADJUSTABLE FLOW WHEEL LOCK HANDLE WITH DECK FLANGE AND UNDER DECK CLAMP.				
U-2	AMERICAN STANDARD WASHBROOK 6501.511	WALL HUNG, VITREOUS CHINA URINAL WITH WASH OUT FLUSHING ACTION AND TOP SPUD. MOUNT AT ADA HEIGHT. CHROME PLATED, EXPOSED WATER CLOSET 1.0 GPF FLUSH VALVE WITH 3/4" TOP SPUD.	1.) JAY R SMITH	1.) PROVIDE CARRIER AS REQUIRED TO SUIT APPLICATION.	-	
WC-1	AMERICAN STANDARD CADET 3 FLOWISE 2832.128	ADA COMPLIANT, FLOOR MOUNTED, FLUSH TANK, VITREOUS CHINA WATER CLOSET.	CHURCH 9500 C	SEAT: SOLID PLASTIC, OPEN FRONT, WHITE ELONGATED BOWL, INTEGRAL BUMPERS, EXTERNAL CHECK HINGES WITH STAINLESS STEEL POSTS.	-	



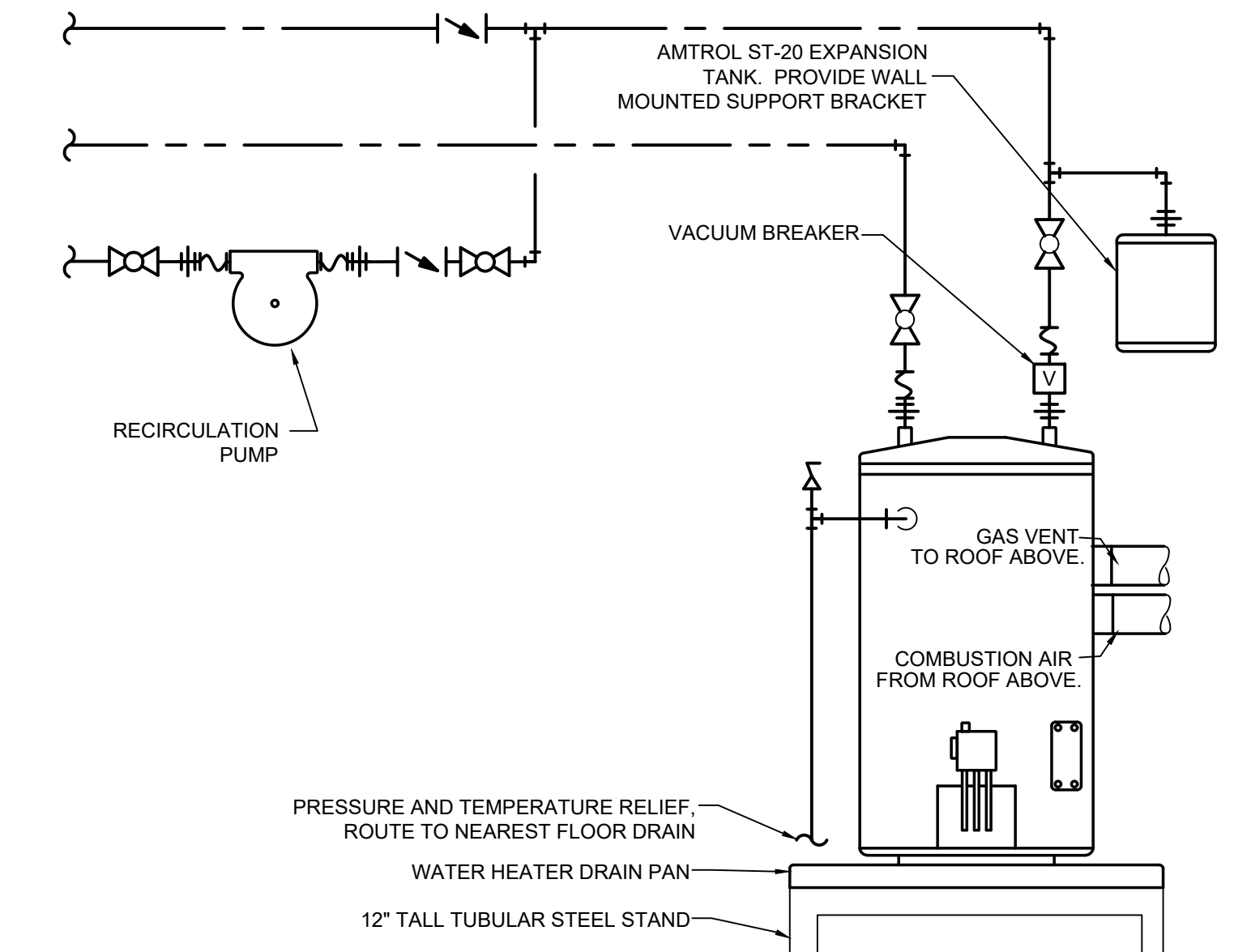
7 PIPE ROOF SUPPORT DETAIL
NO SCALE



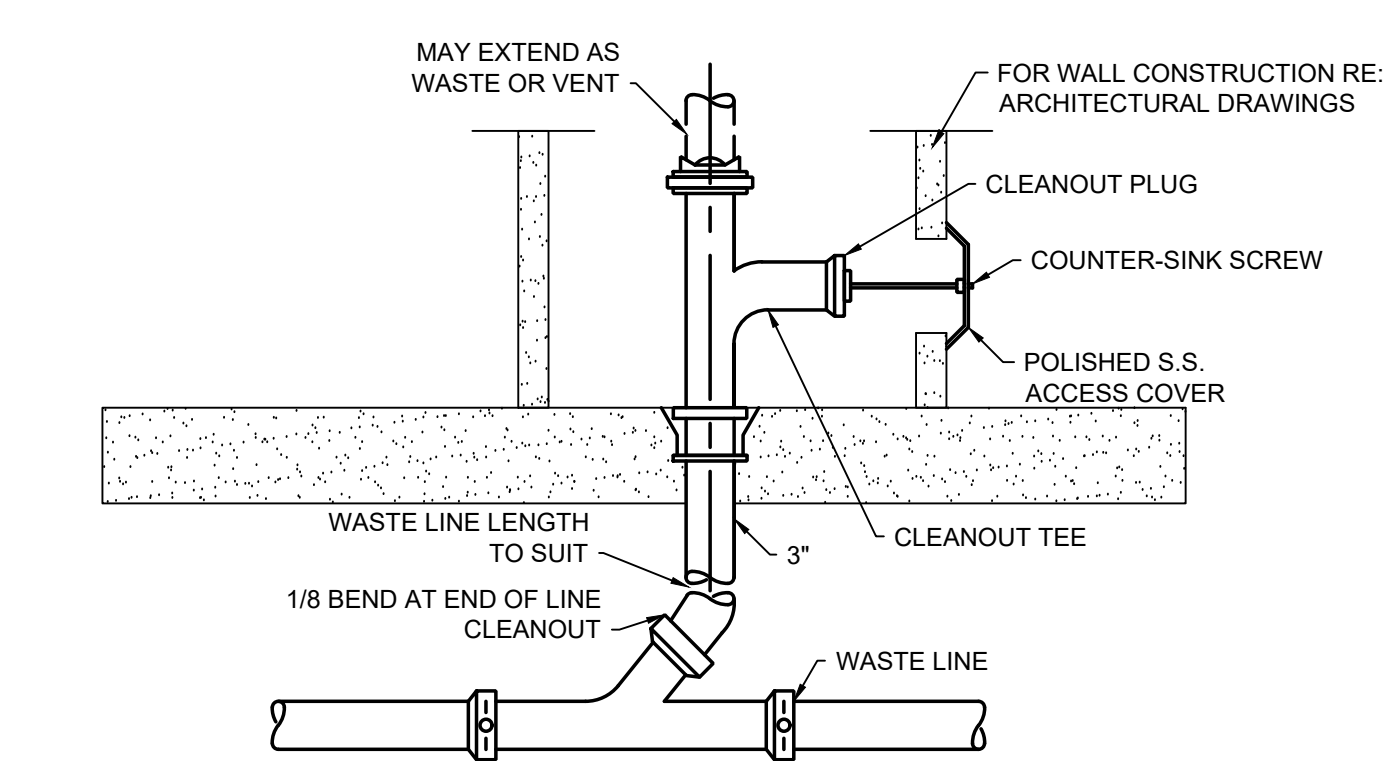
5 DOMESTIC WATER SERVICE DETAIL
NO SCALE



6 PVC FLOOR CLEANOUT DETAIL
NO SCALE



2 GAS WATER HEATER DETAIL
NO SCALE

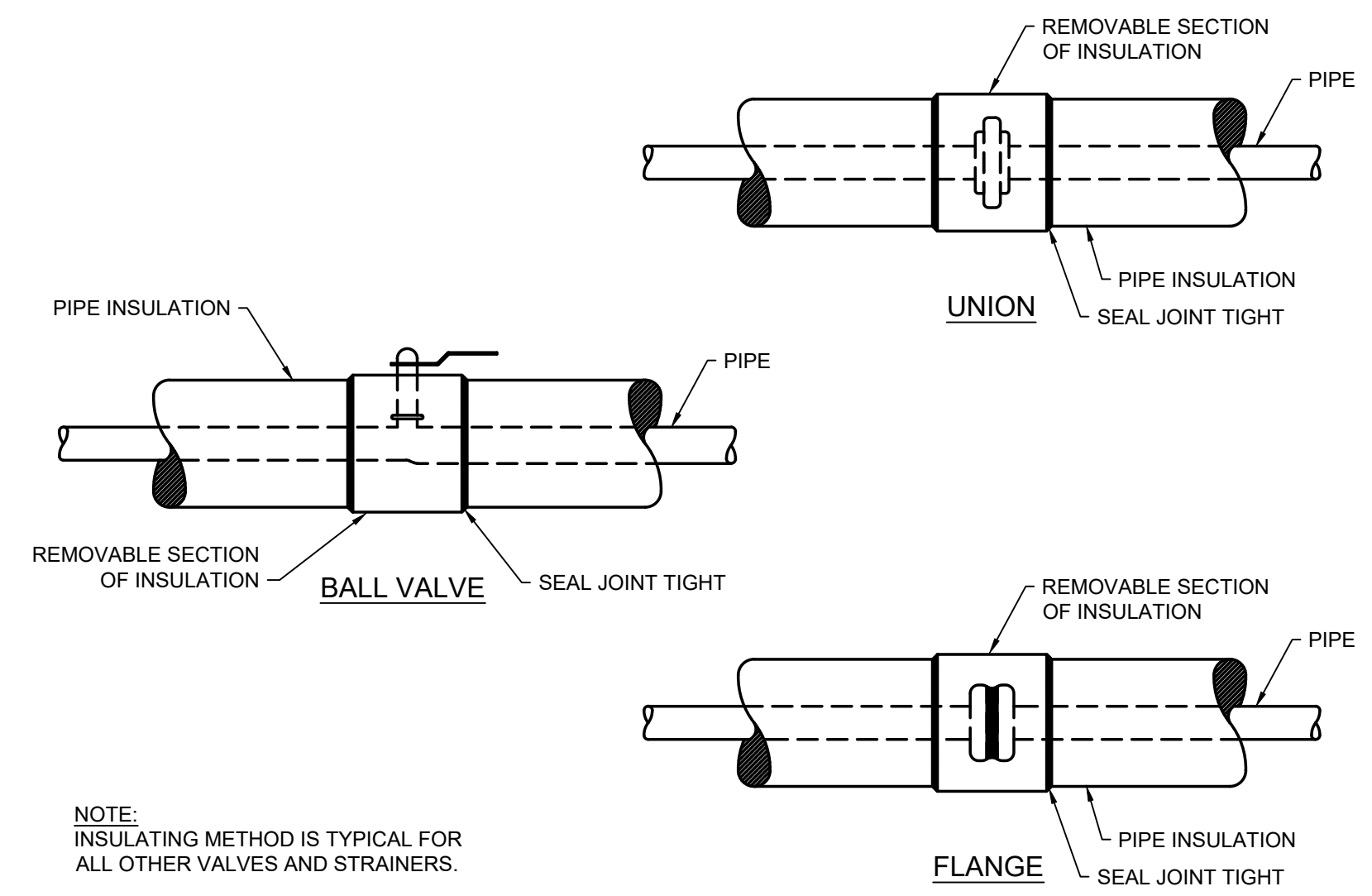


1 PVC WALL CLEANOUT DETAIL
NO SCALE

INSTANTANEOUS GAS WATER HEATER SCHEDULE								
UNIT CALLOUT	UNIT INFORMATION							NOTES
	MFG	MODEL NO.	FLOW (GPM)	EWI (°F)	LWT (°F)	TOTAL INPUT (MBH)	VOLT/PH	
WH-1	BOSCH	C1050ES	9.4	40	115	199	120/1	1

NOTES:
1. SUPPLY WITH FACTORY CONTROL PANEL. MANIFOLD ALL UNITS TOGETHER TO ACHIEVE 15 GPM OF WATER FLOW AT 75 DEGREE F TEMPERATURE RISE.

PIPE INSULATION SCHEDULE	
DOMESTIC COLD WATER	PERFORMED FIBERGLASS WITH AS-1" THICK, 3.5-18/CU. FT
DOMESTIC HOT WATER	PERFORMED FIBERGLASS WITH AS-1" THICK, 3.5-18/CU. FT
DOMESTIC RECIRCULATING HOT WATER	PERFORMED FIBERGLASS WITH AS-1" THICK, 3.5-18/CU. FT
INTERIOR HVAC CONDENSATE	ARMAFLEX: 1/2" THICK
REFRIGERANT LINES	ARMAFLEX: 1/2" THICK



NOTE: INSULATING METHOD IS TYPICAL FOR ALL OTHER VALVES AND STRAINERS.

3 PIPE INSULATION DETAILS
NO SCALE

- GENERAL
- 1 MECHANICAL NOTE REFERENCE
 - 2 DEMOLITION NOTE REFERENCE
 - 3 REVISION NOTE REFERENCE
 - CONNECT TO EXISTING WORK

- PLUMBING
- SAN SOIL OR WASTE ABOVE GRADE OR FLOOR
 - SAN SOIL OR WASTE BELOW GRADE OR FLOOR
 - V PLUMBING VENT
 - ST STORM ABOVE GRADE OR FLOOR
 - ST STORM BELOW GRADE OR FLOOR
 - ST/O STORM OVERFLOW ABOVE GRADE OR FLOOR
 - ST/O STORM OVERFLOW BELOW GRADE OR FLOOR
 - DOMESTIC COLD WATER
 - DOMESTIC HOT WATER
 - RECIRCULATING DOMESTIC HOT WATER
 - FCO FLOOR CLEAN OUT
 - WCO WALL CLEAN OUT
 - CO CLEAN OUT
 - G GAS (NATURAL)
 - HB HOSE BIBB
 - WH WALL HYDRANT
 - FLOOR SINK, FLOOR DRAIN, AREA DRAIN
 - RD ROOF DRAIN
 - ORD OVERFLOW ROOF DRAIN
 - REDUCED PRESSURE BACKFLOW PREVENTER
 - PLUMBING VENT RISER CALL-OUT
 - ELBOW DOWN
 - ELBOW UP
 - TEE UP
 - TEE DOWN
 - UNION
 - CAP
 - BALL (SHUTOFF) VALVE
 - BFP BACK FLOW PREVENTOR
 - CO CLEAN OUT
 - CW DOMESTIC COLD WATER
 - FCO FLOOR CLEAN OUT
 - FD FLOOR DRAIN
 - FS FLOOR SINK
 - G GAS (NATURAL)
 - GCO GRADE CLEAN OUT
 - HW DOMESTIC HOT WATER
 - RHW DOMESTIC RECIRCULATION HOT WATER
 - SAN SANITARY
 - VTR VENT THROUGH ROOF
 - WCO WALL CLEAN OUT

4 PLUMBING SYMBOLS & ABBREVIATIONS
NO SCALE

C:\USERS\WELCH\DESKTOP\MWEC\2023\2311000E - WOOLWORTH BUILDING PLUMBING.DWG : 6/5/2023 10:20:40 AM : estum